



**WORLD'S BEST
ALLOY BULLBARS**

East Coast Bullbars (ECB Pty Ltd)

Tel: 07 3897 5700

Fax: 07 3283 1168

ecb@ecb.com.au www.ecb.com.au

29 Snook St
Clontarf QLD 4019
Australia

Po Box 122
Margate QLD 4019
Australia

BF83SY

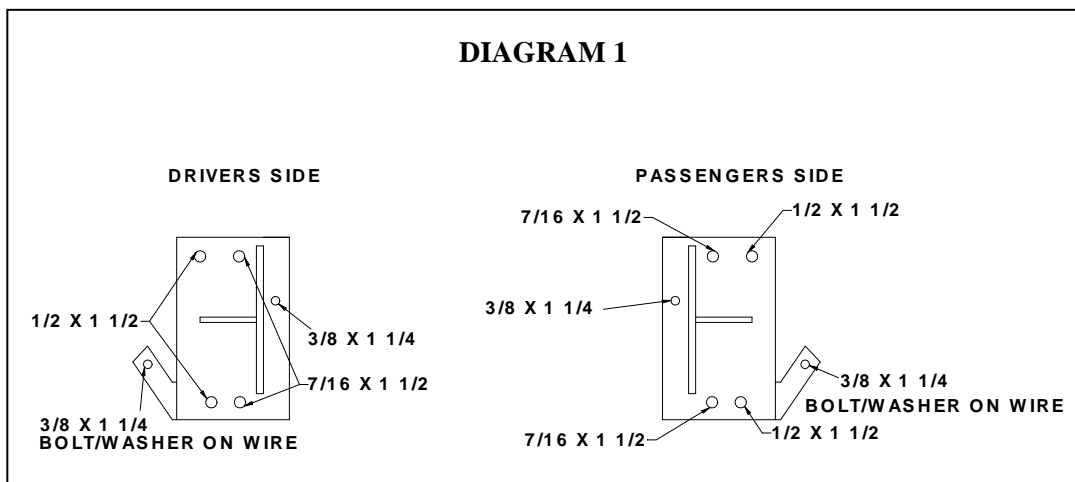
REPLACES: 18.02.10
REVISED: 09.07.10

FITTING INSTRUCTIONS

**FORD TRANSIT VH 8/00-8/06 BIG TUBE™ BULLBAR
VEHICLE FRONTAL PROTECTION SYSTEM (VFPS)
FOR AIR BAG & ADR COMPLIANT VEHICLES**

Check installation hardware before commencing.

1. Remove bumper cover. Four castle head bolts in bumper cover face, one castle head bolt and one clip at bumper side returns (each side). Four plastic PK clips at lower centre.
2. Remove bumper cover support. Four 10mm head bolts. **See figure 1.**
NOTE: On certain models carefully unbolt cooling element from bumper cover support.
3. Remove captive nuts from chassis where bumper cover support was bolted.
4. Remove plastic under guard from bumper cover support. **See figure 2.**
5. Locate indicator / park light wiring loome under bonnet and splice ECB indicator / park light wiring (supplied) into original wiring. Use cable locks (supplied).
6. Die grind lip on passenger side tow hook bracket off. **See figure 3.**
NOTE: Treat exposed metal with a rust inhibitor.
7. Attach steel mounting brackets (supplied) to front of chassis, see diagram 1 for bolts/nuts. **See figures 4 and 5** for chassis position. **FINGER TIGHTEN ONLY.**



8. Align steel mounting brackets central with vehicle, ensuring a minimum distance of 1006mm between steel mounting brackets for alloy protection bar to mount on inside. **TIGHTEN 7/16 and 1/2 bolt/nuts.**
9. Die grind lower chassis hole for 3/8 x 1 ¼ bolt, washer on wire (supplied) to fit through. **See figure 6.**
NOTE: Treat exposed metal with a rust inhibitor.



**WORLD'S BEST
ALLOY BULLBARS**

East Coast Bullbars (ECB Pty Ltd)

Tel: 07 3897 5700

Fax: 07 3283 1168

ecb@ecb.com.au www.ecb.com.au

29 Snook St
Clontarf QLD 4019
Australia

Po Box 122
Margate QLD 4019
Australia

10. For side chassis brackets drill a 10mm hole (each side) through chassis using side chassis bracket as a guide, **see figure 7**. Bend wire on 3/8 x 1 ¼ bolt to shape and insert through lower chassis hole to protrude out through drilled hole. Use 3/8 flat washer, spring washer and nut (supplied). **TIGHTEN**.
11. Using steel mounting brackets as a guide drill a 10mm hole (each side) through chassis flange at front of chassis. **NOTE:** Treat exposed metal with a rust inhibitor. Use 3/8 x 1 ¼ bolt, nut and washers (supplied). **See figure 8. TIGHTEN.**
12. Fit ECB LED indicator / park lights (supplied) into protection bar as per instructions supplied with the LED indicator kit. **NOTE: Ensure park light is to outside. See figure 9.**
13. Attach 6mm black clip lock trim (supplied) to rear of protection bar. **NOTE:** Trim off lower edge on an angle so trim will sit flush with end of protection bar. **See figures 10, 11 and 12.**
14. Attach 3mm black clip lock trim (supplied) to tow point access hole in protection bar. **See figure 13.**
15. Attach ECB protection bar to inside of steel mounting brackets. Use 9/16 x 1 ½ bolts, nuts and washers (supplied). Align in position with approximately 10mm clearance under grille. Align evenly with vehicle at side returns. **TIGHTEN ALL BOLTS.**
16. Attach cooling element to angle brackets inside protection bar. Use original bolts. (If required).
17. Attach plastic under guard to brackets inside protection bar with plastic under guard sitting inside fold on lower protection bar skirt. Drill 6mm holes through protection bar skirt to align with two central holes in plastic under guard. Use ¼ x 1 bolts, nuts and washers (supplied) to attach to protection bar skirt and two ¼ x 1 bolts, nuts and washers (supplied) to attach to protection bar brackets. **See figures 14 and 15.**
18. Connect indicator / park light wiring and **CHECK OPERATION.**

ENSURE NUMBER PLATE IS CLEARLY VISABLE

Note: When fitting/refitting the licence plate to the vehicle, ensure there is no obstruction to licence plate vision in accordance with local authorities. If required relocate licence plate to an alternate location.

Further VFPS Notes:

- a) Do not attach VFPS to the vehicle using anchorages not intended for this purpose (e.g. engine mounting bolts).
- b) Do not use this product for any vehicle make or model, other than those specified by the VFPS manufacturer.
- c) Do not remove the plaque or label from the VFPS.
- d) Do not modify the structure of the VFPS in any way.
- e) No accessory or fitment should project forward of the VFPS forward profile.
- f) **ENSURE THESE INSTRUCTIONS ARE LEFT WITH VEHICLE OWNER AND/OR OPERATOR.**

IMPORTANT INFORMATION

Periodically check bolts and nuts for correct tightness, especially if travelling on rough roads



**WORLD'S BEST
ALLOY BULLBARS**

East Coast Bullbars (ECB Pty Ltd)

Tel: 07 3897 5700

Fax: 07 3283 1168

ecb@ecb.com.au www.ecb.com.au

29 Snook St
Clontarf QLD 4019
Australia

Po Box 122
Margate QLD 4019
Australia

FITTING KIT

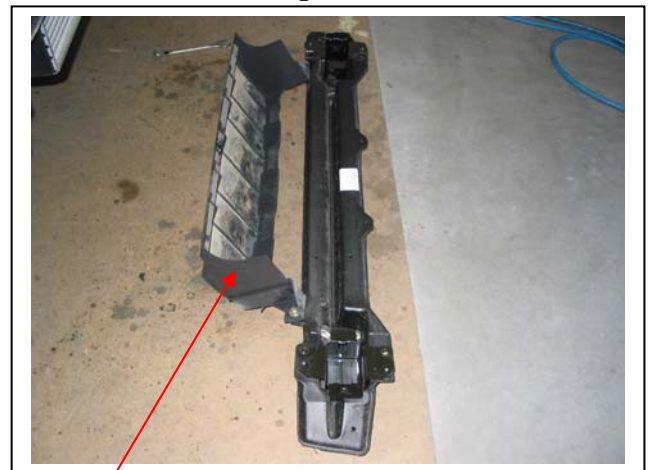
2 – Steel mounting brackets.	4 – ¼ x 1 bolts.
4 – 7/16 x 1 ½ bolts/nuts.	4 – ¼ nylock nuts.
8 – 7/16 flat washers.	8 – ¼ flat washers.
4 – 7/16 spring washers.	4 – 9/16 x 1 ½ bolts/nuts.
4 – ½ x 1 ½ bolts/nuts.	8 – 9/16 flat washers.
8 – ½ flat washers.	4 – 9/16 spring washers.
4 – ½ spring washers.	1 – ECB LED Indicator / Park light kit
2 – 3/8 x 1 ¼ bolt/nuts.	6 – Cable locks.
2 – 3/8 x 1 ¼ bolts, washers on 200mm wire.	1 – 250mm length 3mm black clip lock trim.
2 – 3/8 nuts.	1 – 2520mm length 6mm black clip lock trim.
6 – 3/8 flat washers.	
4 – 3/8 spring washers.	

Figure 1



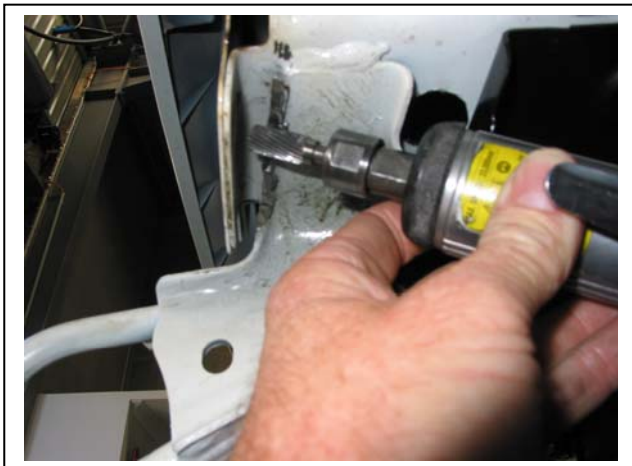
Shown removing bumper cover support with plastic under guard

Figure 2



Remove plastic under guard from bumper cover support

Figure 3



Die grinding lip from tow bracket area for nut/washer clearance

Figure 4



Drivers side shown



**WORLD'S BEST
ALLOY BULLBARS**

East Coast Bullbars (ECB Pty Ltd)

Tel: 07 3897 5700

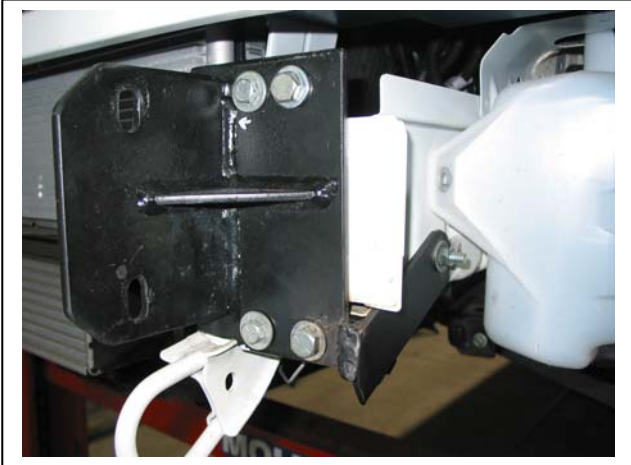
Fax: 07 3283 1168

ecb@ecb.com.au www.ecb.com.au

29 Snook St
Clontarf QLD 4019
Australia

Po Box 122
Margate QLD 4019
Australia

Figure 5



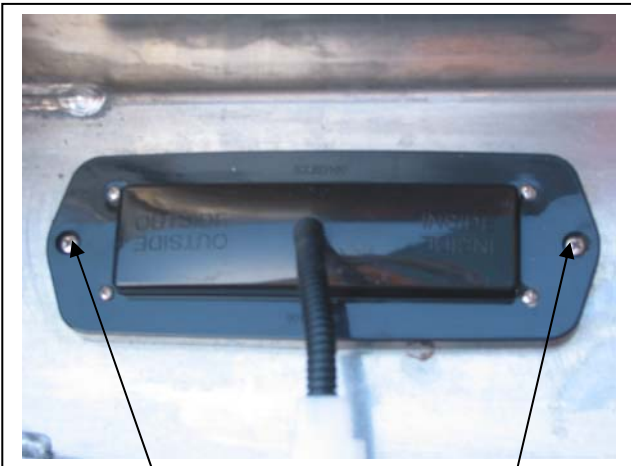
Passenger side shown

Figure 7



Passenger side shown

Figure 9



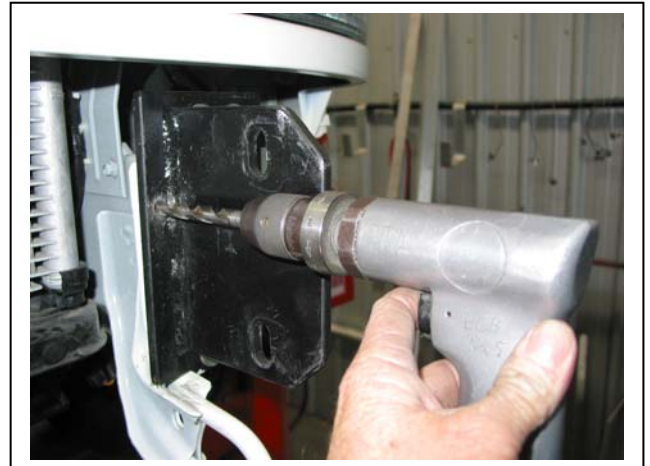
Stainless steel self-tappers

Figure 6



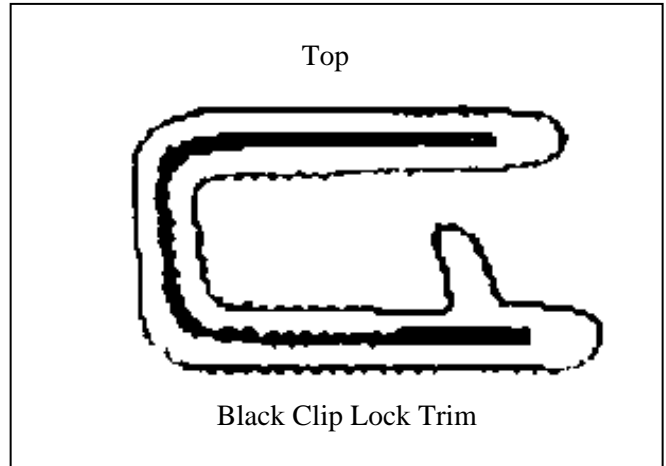
Shown die-grinding passenger side lower hole.

Figure 8



Passenger side shown

Figure 10



Top

Black Clip Lock Trim



**WORLD'S BEST
ALLOY BULLBARS**

East Coast Bullbars (ECB Pty Ltd)

Tel: 07 3897 5700

Fax: 07 3283 1168

ecb@ecb.com.au www.ecb.com.au

29 Snook St
Clontarf QLD 4019
Australia

Po Box 122
Margate QLD 4019
Australia

Figure 11

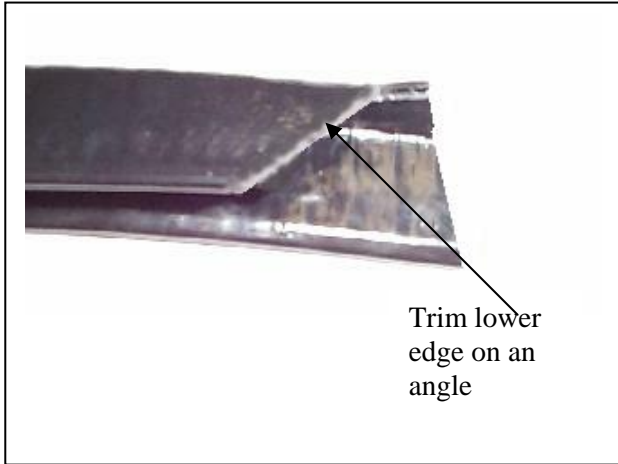


Figure 12

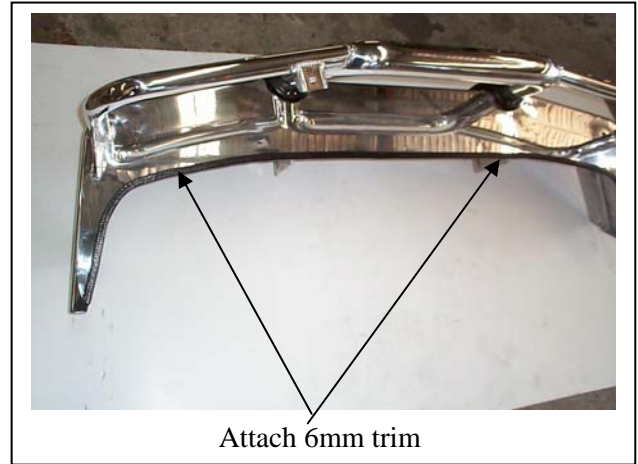
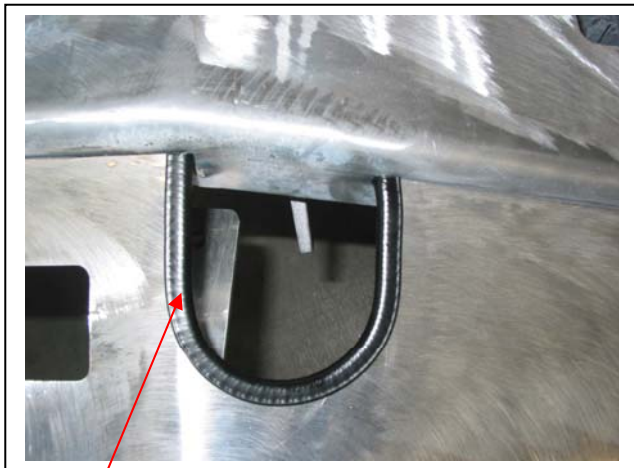
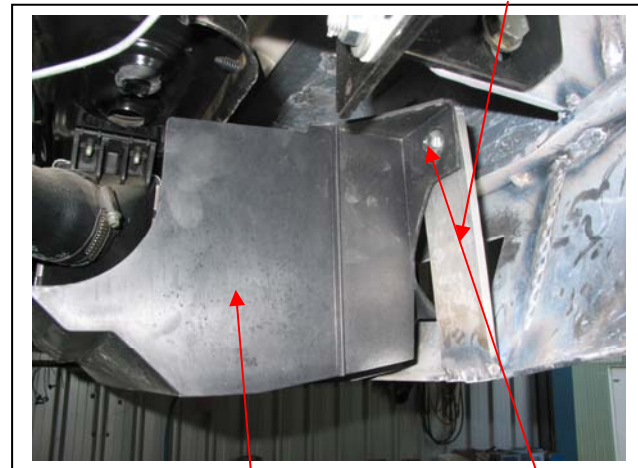


Figure 13



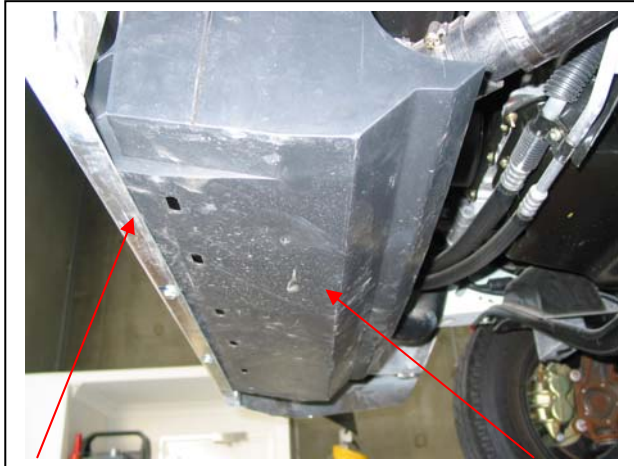
Attach 3mm clip lock trim to towing access area

Figure 14



Plastic under guard 1/4 x 1 bolt/nut

Figure 15



Protection bar skirt Plastic under guard



**WORLD'S BEST
ALLOY BULLBARS**

East Coast Bullbars (ECB Pty Ltd)

Tel: 07 3897 5700

Fax: 07 3283 1168

ecb@ecb.com.au www.ecb.com.au

29 Snook St
Clontarf QLD 4019
Australia

Po Box 122
Margate QLD 4019
Australia

We value your comments

Dear Fitter,

ECB would like to know how you went with the installation of this product. We value your comment and may need to contact you to clarify some details so please complete your contact details clearly.

We would appreciate if you could complete as many of the following details as possible.

Your Name:	Your contact No.
Product Part No.	Product Invoice No.
Product Description:	Make, model, and year of vehicle:
Product Work Order No.	Company your from/Company product purchased from:

Date of Fitment: ____/____/____

Was the fitting hardware supplied complete?

Yes

No

If no what was not supplied

Did the installation go well?

Yes

No

Please provide comments

Please draw diagrams if you need to.

Post to

Reply Paid 122

PO Box 122

Margate QLD 4019

Fax to

(07) 3283 1168



WORLD'S BEST
ALLOY BULLBARS

East Coast Bullbars (ECB Pty Ltd)

Tel: 07 3897 5700

Fax: 07 3283 1168

ecb@ecb.com.au www.ecb.com.au

29 Snook St
Clontarf QLD 4019
Australia

Po Box 122
Margate QLD 4019
Australia

DESPATCH CHECKLIST BF83SY

Work Order #	
Finish:	
Transport:	
Due Date:	

**See other side of
this page for
photos of all
mounts**

- 2 – Steel mounting brackets.
- 1 – Bolt Kit
- 1 – ECB LED Indicator / Park light kit.
- 1 – 250mm length 3mm black clip lock trim.
- 1 – 2520mm length 6mm black clip lock trim.
- 2 – ECB overrides – **Fitted to bar.**
- 3 – 3mm air scoops – **Fitted to bar.**
- 2 – 6mm air scoops – **Fitted to bar.**



Is this product “the best it can be” Yes _____ / _____

Wrapper's initials / Checker initials

If **NO** fix before continuing

All parts checked and completed by:

Nut and bolts: _____ Date __/__/__

Order control: _____ Date __/__/__

Final wrap check: _____ Date __/__/__



**WORLD'S BEST
ALLOY BULLBARS**

East Coast Bullbars (ECB Pty Ltd)

Tel: 07 3897 5700

Fax: 07 3283 1168

ecb@ecb.com.au www.ecb.com.au

29 Snook St
Clontarf QLD 4019
Australia

Po Box 122
Margate QLD 4019
Australia

